

CONFERENCES AND EVENTS

FOUR
POINTS
BY SHERATON
.....
ZURICH



MAKE. CREATE. INNOVATE.

8 Conference-, Meeting- and Eventspaces

Up to 150 people

Internet/Wifi: 1Gb/s (up- and download)

Daylight in every room

View over the roofs of the Sihlcity and surroundings

Equipped with state of the art technology:

Up to 8000 ANSI lumen projector

82" Samsung Smartboards

Wall control panel for lighting and window blinds

Air Condition, flipcharts, pin boards, etc. are standard equipment in all rooms



ROOM 1

Daylight from three sides on 97 sqm up to 60 people

ROOMS 2+3

8000 ANSI lumen projector, with space for up to 150 people

ROOM 4

Boardroom fitting 12 people on an oval table, 82" Smart TV

ROOMS 5+6

Two combinable function rooms for a maximum of 44 people

ROOMS 7+8

Two combinable function rooms fitting maximum 60 people

BASIC
PACKAGE

Morning coffee break
2-course lunch seated or standing
Afternoon coffee break

119.00

CHF/PERSON

FROM 15 PERSONS

HALF DAY 99.00

CHF/PERSON

OPTIMO
PACKAGE

Permanent coffee break
Morning coffee break
3-course lunch seated or standing
Afternoon coffee break

129.00

CHF/PERSON

FROM 10 PERSONS

HALF DAY 109.00

CHF/PERSON

Coming with your package:

MEETING ROOM

with the setup of your choice with
unlimited mineral water
in your meeting room

+

EQUIPMENT

Highspeed Internet

Flipchart, Screen,

Moderator Case,









Projector

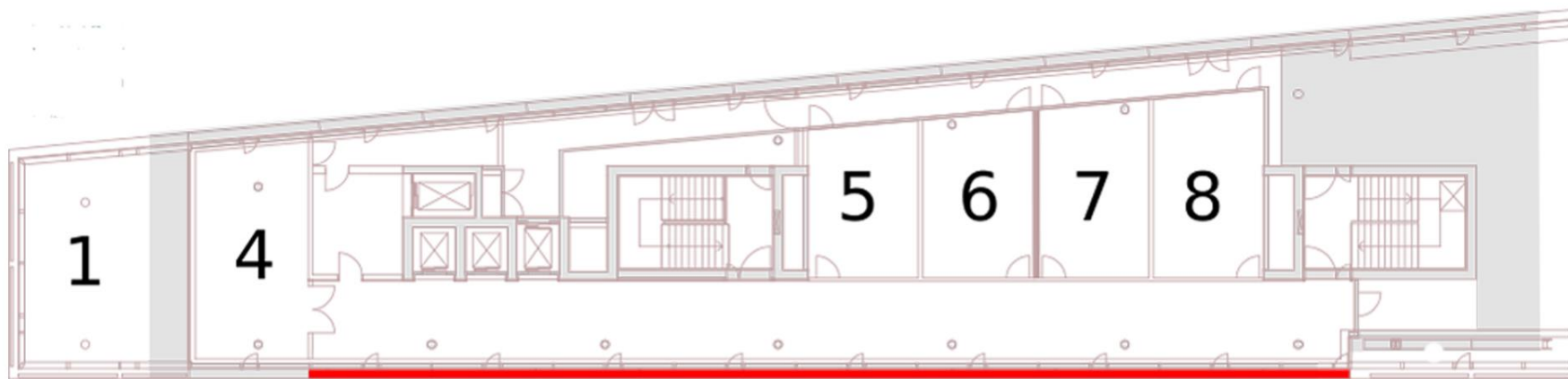
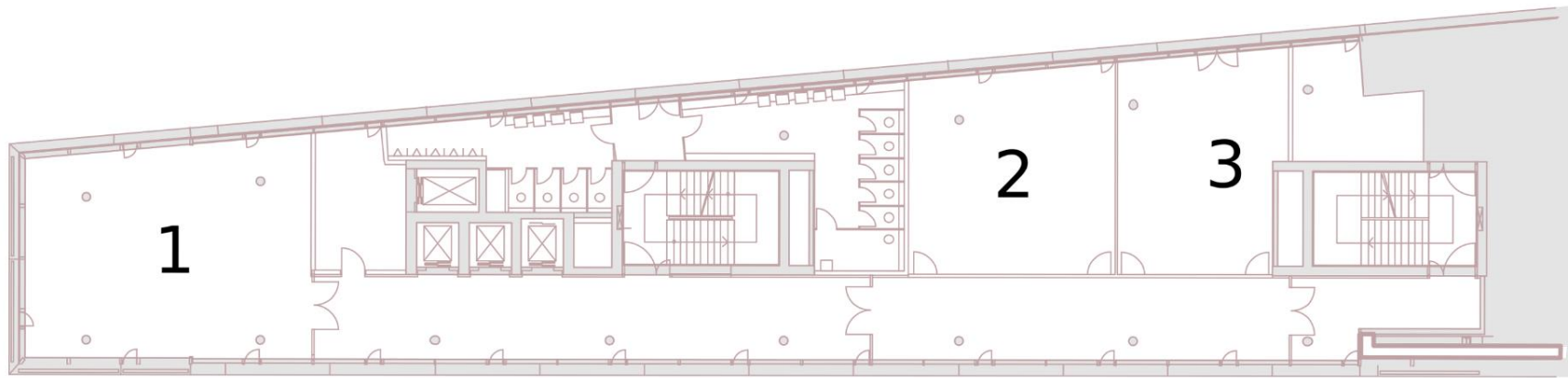
or

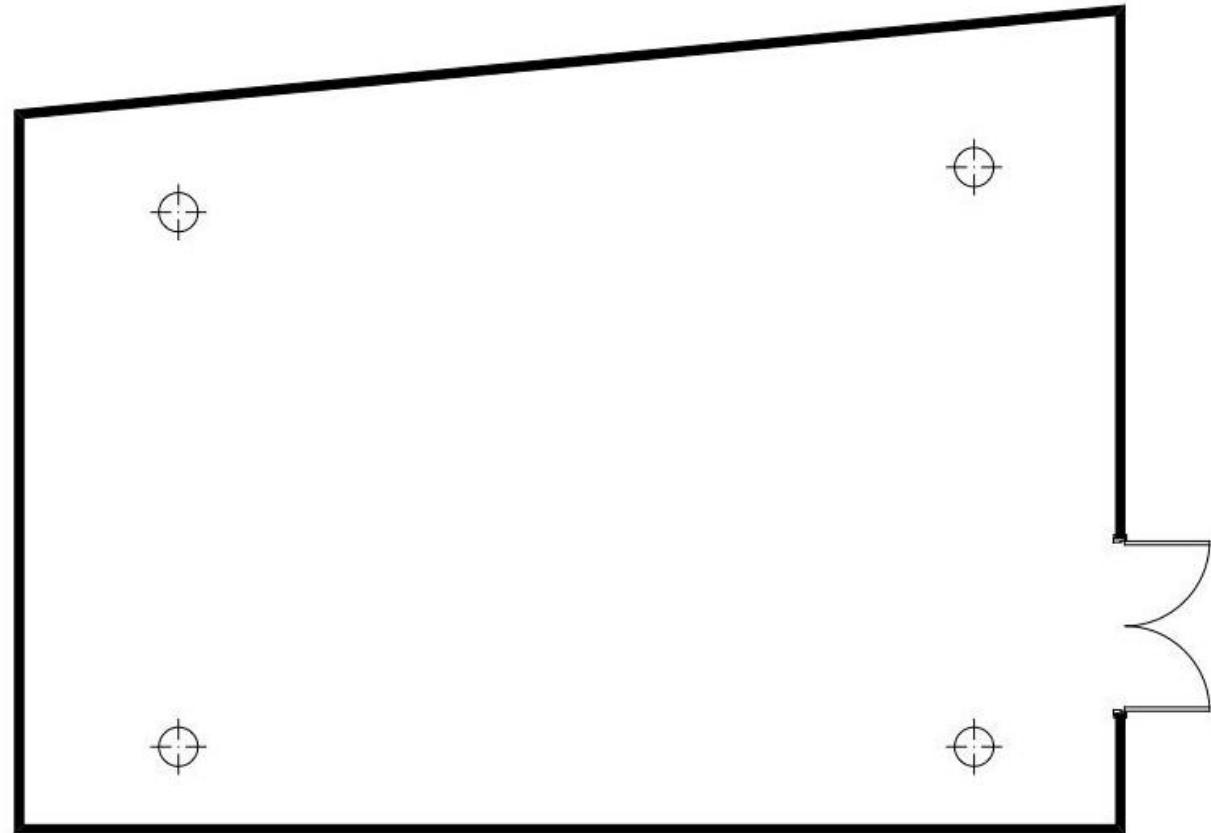
82" Interactive Touchscreen TV

DID NOT FIND A SUITABLE PACKAGE?

We are happy to create an individual package for you.

									
Room 1	98 sqm	8.5 x 11.5 m	3.4 m	42	32	60	30	22	30
Room 2	67 sqm	8.1 x 8.3 m	3.4 m	35	25	50	24	18	22
Room 3	58 sqm	8.8 x 6.5 m	3.4 m	28	18	45	20	16	20
Room 2+3	182 sqm	11.7 x 15.3 m	3.4 m	98	70	150	80	40	40
Room 4	42 sqm	8.8 x 4.6 m	2.4 m	12	-	-	-	-	-
Room 5	28 sqm	6.0 x 4.5 m	2.4 m		8	24	10	10	10
Room 6	29 sqm	6.4 x 4.5 m	2.4 m		8	30	12	8	12
Room 5+6	56 sqm	6.4 x 9.1 m	2.4 m		20	44	22	20	20
Room 7	30 sqm	6.8 x 4.5 m	2.4 m		8	30	12	12	12
Room 8	35 sqm	7.2 x 5.2 m	2.4 m		8	30	12	12	12
Room 7+8	65 sqm	7.0 x 9.1 m	2.4 m		25	60	30	24	22





ROOM 1

98 sqm · 8.5 x 11.5 x 3.4 m



30



8000 ANSI lumen projector
RGB, HDMI



22



230 V, 50 Hz



20



Typ J (3 poles)



60



Wall control panel (lighting, window
blinds, projection screens)

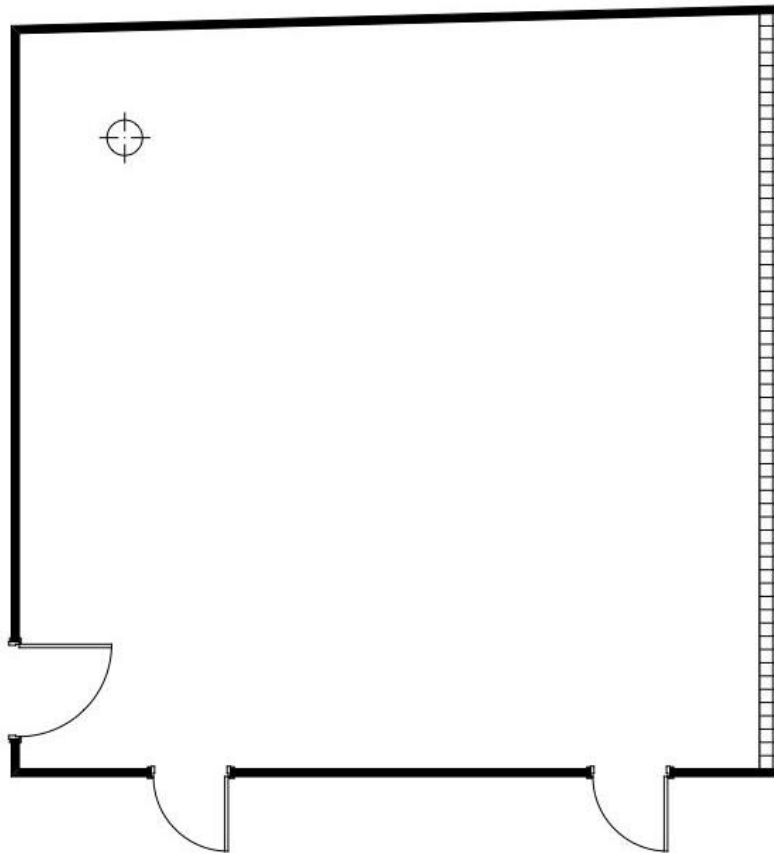


42

Rent:

Half day CHF 790.-

Full day CHF 990.-



ROOM 2

67 sqm · 8.1 x 8.3 x 3.4 m



24



8000 ANSI lumen projector
RGB, HDMI



18



230 V, 50 Hz



16



Typ J (3 poles)



50



Wall control panel (lighting,
window blinds, projection screens)

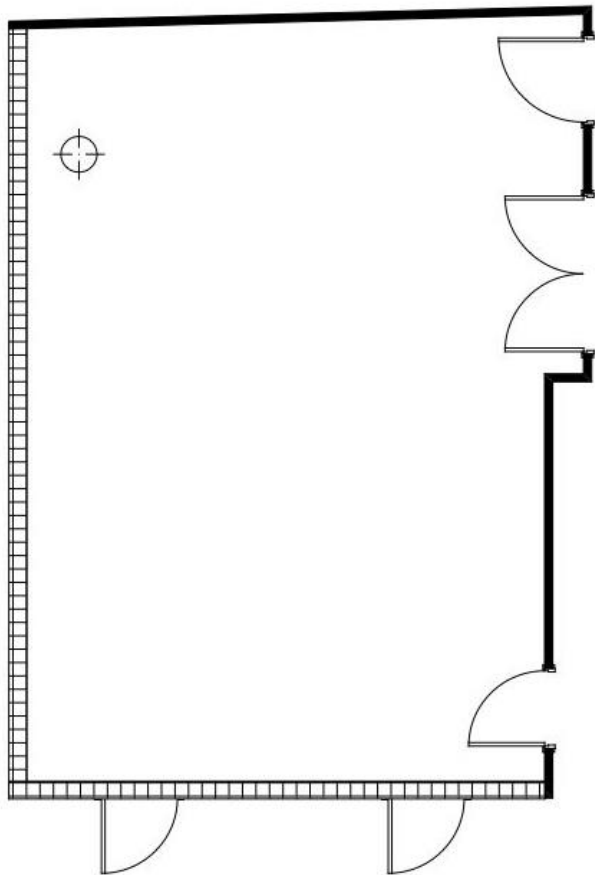


35

Rent:

Half day CHF 690.-

Full day CHF 890.-



ROOM 3

58 sqm · 8.8 x 6.5 x 3.4 m



18



5000 ANSI lumen projector
RGB, HDMI



16



230 V, 50 Hz



16



Typ J (3 poles)



45



Wall control panel (lighting,
window blinds, projection screens)

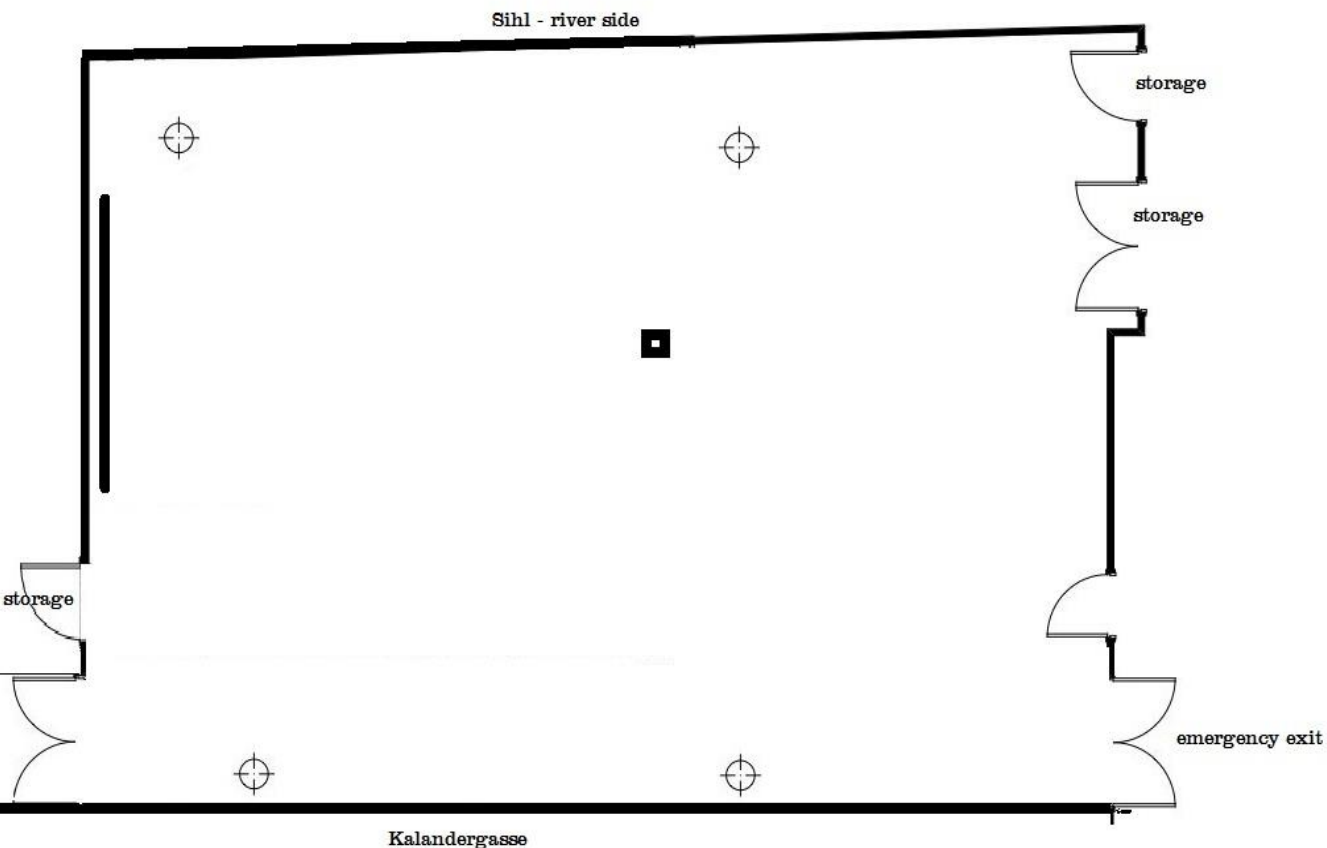


28

Rent:

Half day CHF 590.-

Full day CHF 790.-



ROOM 2+3

182 sqm · 11.7 x 15.3 x 3.4 m



80



8000 ANSI lumen projector
RGB, HDMI



38



230 V, 50 Hz



32



Typ J (3 poles)



150



Wall control panel (lighting,
window blinds, projection screens)

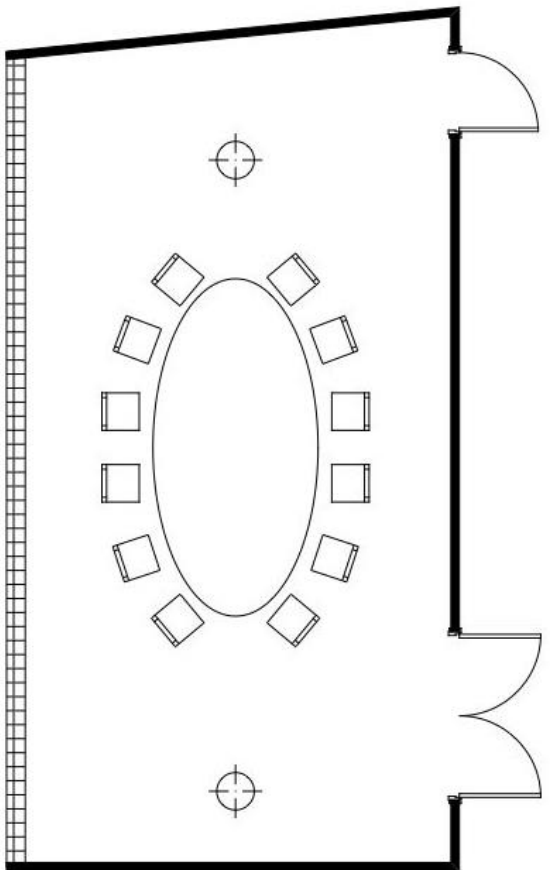


98

Rent:

Half day CHF 1200.-

Full day CHF 1700.-



ROOM 4 (Boardroom)

42 sqm · 8.8 x 4.6 x 2.4 m



-



82" Samsung Smart TV
USB, RGB, HDMI



-



230 V, 50 Hz



12



Typ J (3 poles)



-



Wall control panel (lighting,
window blinds, projection screens)

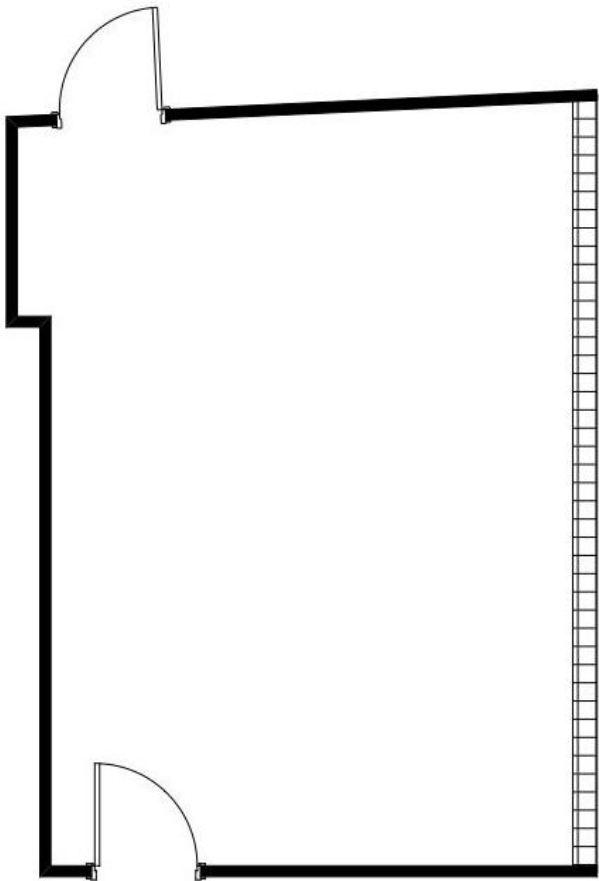


-

Rent:

Half day CHF 520.-

Full day CHF 650.-



ROOM 5

28 sqm · 6.0 x 4.5 x 2.4 m



-



82" Samsung Smart TV
USB, RGB, HDMI



10



230 V, 50 Hz



10



Typ J (3 poles)



24



Wall control panel (lighting,
window blinds, projection screens)



-

Rent:

Half day CHF 390.-

Full day CHF 490.-

ROOM 6

29 sqm · 6.4 x 4.5 x 2.4 m



-



3000 ANSI lumen projector

or

82" Samsung Smart TV



8



230 V, 50 Hz



12



Typ J (3 poles)



30



Wall control panel (lighting,
window blinds, projection screens)

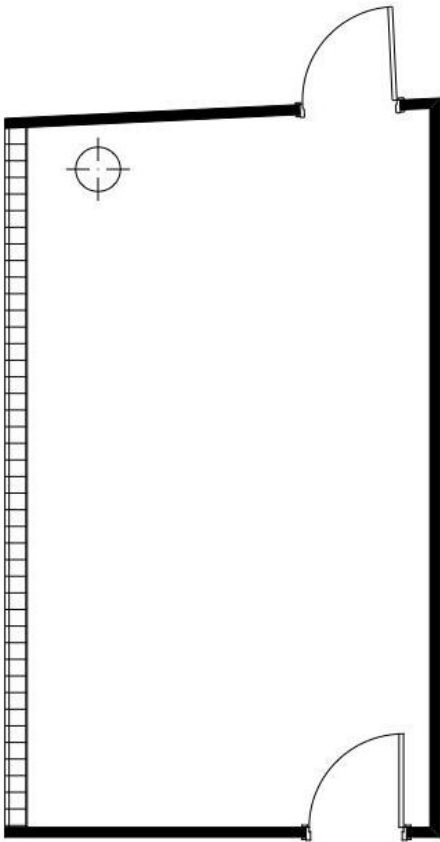


-

Rent:

Half day CHF 390.-

Full day CHF 490.-



ROOM 5+6

56 sqm · 6.4 x 9.1 x 2.4 m



22



3000 ANSI lumen projector
RGB, HDMI



20



230 V, 50 Hz



20



Typ J (3 poles)



44



Wall control panel (lighting,
window blinds, projection screens)

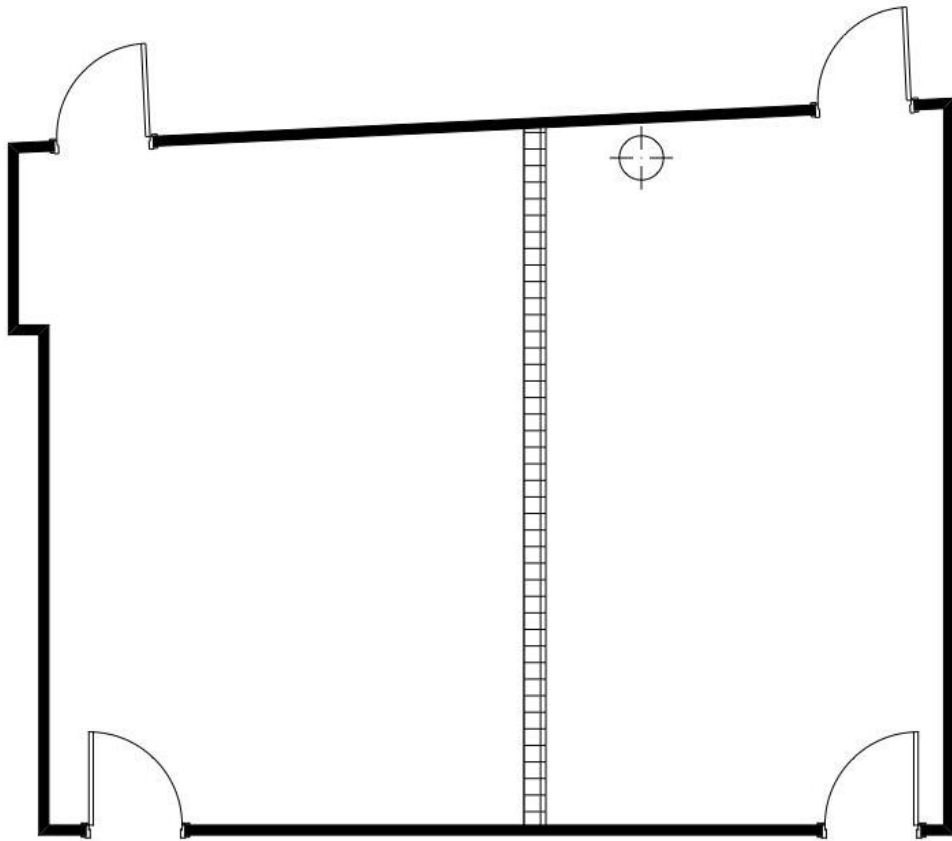


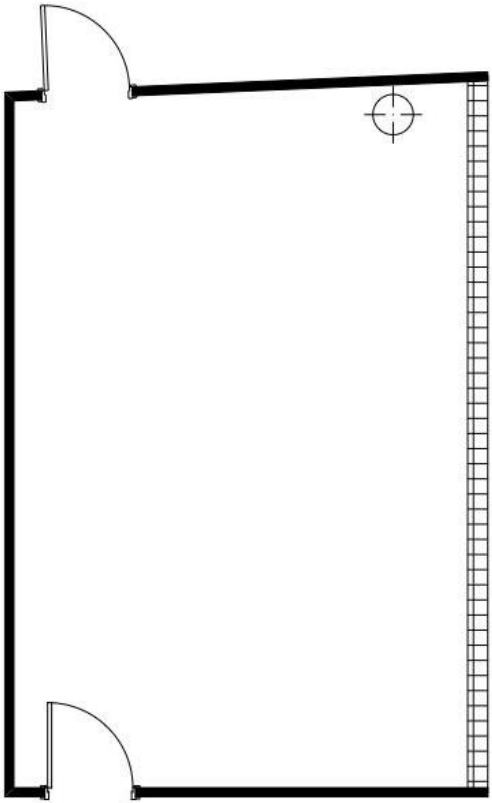
-

Rent:

Half day CHF 550.-

Full day CHF 750.-





ROOM 7

30 sqm · 6.8 x 4.5 x 2.4 m



-



3000 ANSI lumen projector
RGB, HDMI



12



230 V, 50 Hz



12



Typ J (3 poles)



30



Wall control panel (lighting,
window blinds, projection screens)

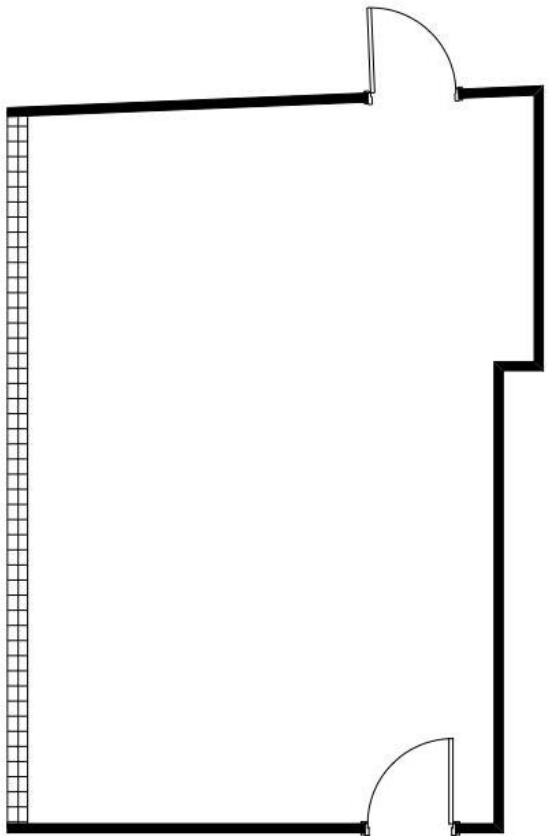


-

Rent:

Half day CHF 390.-

Full day CHF 490.-



ROOM 8

35 sqm · 7.3 x 5.2 x 2.4 m



-



82" Samsung Smart TV
USB, RGB, HDMI



14



230 V, 50 Hz



12



Typ J (3 poles)



30



Wall control panel (lighting,
window blinds, projection screens)

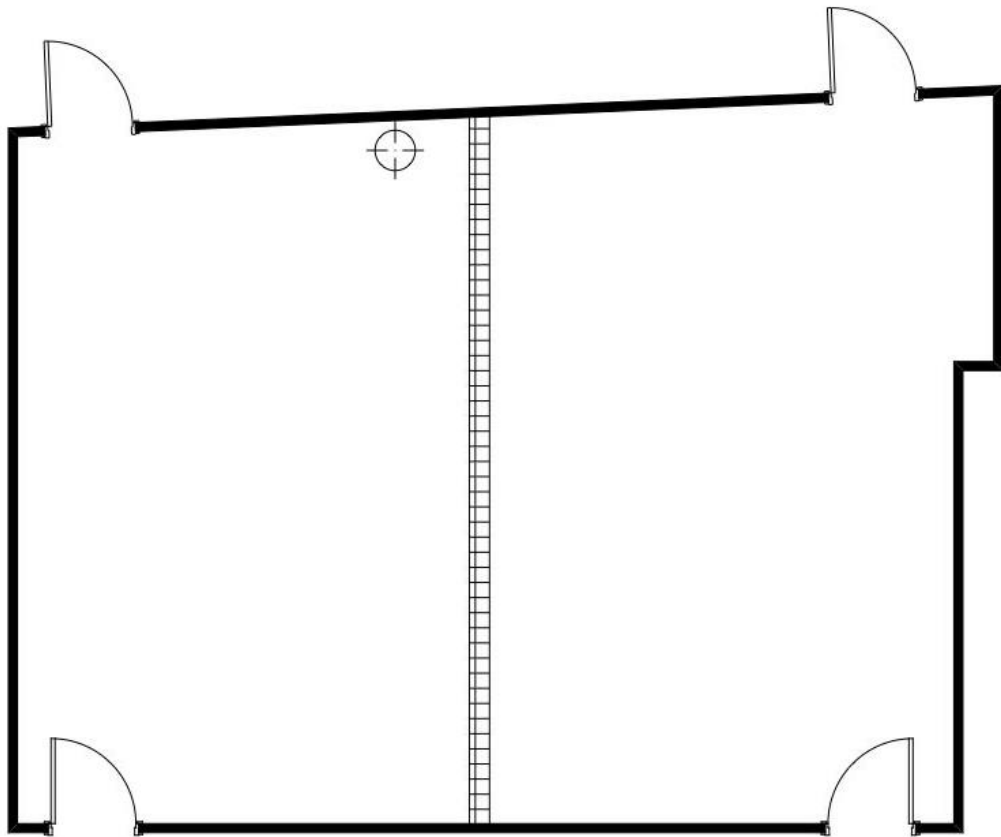


-

Rent:

Half day CHF 390.-

Full day CHF 490.-



ROOM 7+8

65 sqm · 7.0 x 9.1 x 2.4 m



32



3000 ANSI lumen projector
or



22



82" Samsung Smart TV

230 V, 50 Hz



20



Typ J (3 poles)



60



Wall control panel (lighting,
window blinds, projection screens)



-

Rent:

Half day CHF 550.-

Full day CHF 750.-



Touch Multitalent



Optimized

Userinterface



Save and

Share



Versatility



Cooperation



No PC needed



Diagonal Size: 82" / 208 cm
Type 120Hz E-LED BLU
Resolution 1920 x 1080 (Full HD)



Built in Speaker (10W + 10W)
Stereo mini Jack



Rear: USB 2.0 X 1, Touch in X 1
Front: USB 2.0 X 2, Touch out X 1



Analog D-SUB, DVI-D, Display Port 1.2



Rear: HDMI 1, HDMI 2
Front: HDMI 3 Component



Smart View/Screen mirroring for mobile devices

ADDITIONAL EVENT LOCATIONS



FOLIUM

PLACE FOR UNIQUE MOMENTS

The former Sihlpapierfabrik from the year 1886 offers two outstanding locations for events: Papiersaal and Folium. Both facilities have been equipped carefully and preserve their identity from the factory era.

MEETINGS, EVENTS & CATERINGS

This urban event location is just a minute away from the Four Points by Sheraton Sihlcity and offers an exceptional setting for exhibitions, banquets, networking events or presentations for up to 480 people. An appropriate catering from the hotel, the warm-hearted team, our attentive service and the professional support stand for the success of your event.



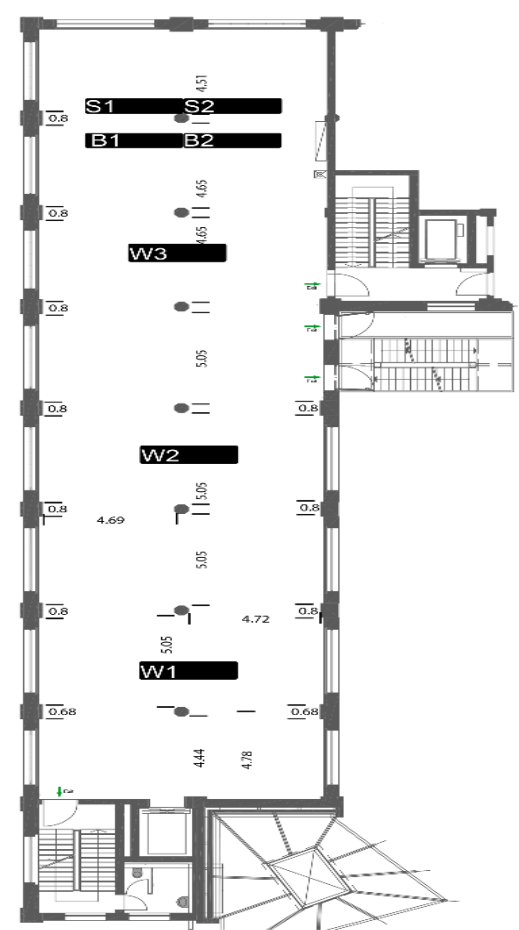
PAPIERSAAL

MODULAR TECHNOLOGY

Sound, lights and images are key factors for the creation of the desired atmosphere and successful events. The facilities are constructed multifunctional and thus offer numerous setup options.

The flexible usage of a Kling & Freitag audio system provides a refined acoustic. Lightings and projections achieve a great effect within the industrial backdrop. Specialists analyze the scope of your event and develop a customized version with the matching light accents, surprising visuals or multiple projections





FOLIUM (1. floor)

415.3 sqm, 41.9 x 9.9 m

3.3 m

300

100

230

480

PAPIERSAAL (2. floor)

442.2 sqm, 42.3 x 10.4 m

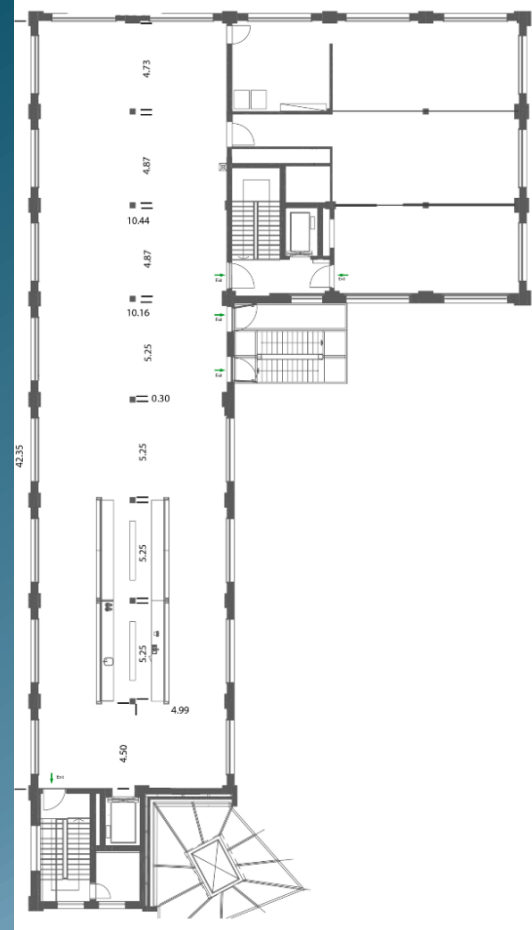
3.0 m

180

100

230

480



RESTAURANT & BAR



BRASSERIE & BAR

L'AMANT

PARISIAN PASSION
ASIAN BREEZE





BRASSERIE & BAR

L'AMANT

PARISIAN PASSION
ASIAN BREEZE





BRASSERIE & BAR

L'AMANT


PARISIAN PASSION
ASIAN BREEZE




I am always there for you...

Dario Gysel 

Sales & Marketing Manager

 +41 44 554 05 53

 +41 76 554 17 18

 dario.gysel@fourpointszurich.com



FOUR POINTS BY SHERATON SIHL CITY ZURICH

4* Design & Lifestyle Hotel
Kalandergasse 1
CH-8045 Zurich

Telephone: +41 44 554 00 00

E-Mail: convention@fourpointszurich.com

